

## Technical Specifications (Short Version)

Thanks for bringing your show to Nairn and *The Little Theatre*.

This provides a basic overview of the facilities at the Theatre, our full technical specification can be found at <https://nairnlittletheatre.org.uk/technical>

### Auditorium

70 seats theatre style on retractable seating / rostra (Rows A/B level with stage)

### Stage Dimensions

Stage Width (Excl SL Wing)	7.3m	Stage Depth (Full)	5.1m
		Stage Depth (To Screen)	4.1m
Proscenium Width	5.6m	Proscenium Height	3.2m
SL Wing Width	1.7-2.7m	SR Wing Width	1m
Dock Door Width	1.54m	Dock Door Height	2.1m
Grid Height	5.6m	LX Bar Height	4m

### Drapes and Masking

U/S Blacks operated from SL Wing	Fixed Mids (Black) operated from SL wing
Red House Tabs operated from SL Wing	Blk S/Tooth Gauze (Olio Drop) op from SR
Three legs SL and SR	Fixed Borders (Black Serge)

### Flying

There are two lightweight (WLL 30kg) fly bars mid stage. However, please note that there is restricted height and we do not have a fly tower, as such tall set pieces / cloths cannot be flown so that they are hidden from view. Spot lines can be facilitated

The cleat rail is located at stage level in the SR wing,

### Scenic Notes

All scenery must be free standing and constructed using standard methods and **must** be fire retardant in accordance with ABTT Code of Practice. A small stock of stage weights are available, but we recommend you bring sufficient for your own scenery.

The upstage projection screen can be used effectively as a cyclorama.



## Lighting

The theatre benefitted extensively from an upgrade to LED lighting in early 2024.

The new LED lighting rig has been designed to accommodate most shows in a space of our size without the need to change it, the inclusion of moving heads allow most specials to be achieved without hanging additional fixtures.

We have a small stock of additional lanterns for specials that can be hung as required, and you're welcome to bring your own, **but we would ask that the fixed house fixtures are not moved or refocussed except by prior arrangement**, subject to other users' requirements around the time of your performance.

<b>Positions</b>	3x Fixed IWBs on Stage (15A and True1) 1x Fixed Bar on Stage (non IWB) 1x FOH Advance Bar IWB 2x FOH Side IWBs	6x Dips on US Wall (15A) (3x SL/3x SR)
<b>Control</b>	ETC Element 40 (Eos 3.x) 18 Channels of Dimming* (24 on request)	250 Channels, 1,024 Attribute
<b>Fixtures</b>	3x eLumen8 Virtuoso 600 RGBAL Profile 5x eLumen8 Virtuoso 600 RGBAL Profile # 6x eLumen8 Virtuoso 2000F RGBAL # 3x eLumen8 Virtuoso 700 CYC RGBALC # 8x Cameo ROOT PAR 6 RGBAW+UV # 4x ADJ LP200ST RGBAL #	3x Elation Fuze Spot # 2x Elation Fuze Profile # 4x S4 Jr (26° Fixed) 6x S4 Jr Zoom (25-50°)
	Fixtures marked with a # above form part of the house rig and cannot ordinarily be repositioned or refocussed.	
<b>Effects / Atmos</b>	UV Cannons, Strobe, Hazer, Smoke, and Low Fog available	

The Little Theatre has a relationship with local hire companies and can source a number of moving heads. LED, and other specialist effects upon request, just let us know what you need and we'll be happy to help

The latest lighting plan, including channel listings and an ETC Eos show file can be found at <https://nairnlittletheatre.org.uk/technical> or eMail [tech@nairnlittletheatre.org.uk](mailto:tech@nairnlittletheatre.org.uk)



## House Audio

<b>Control</b>	Soundcraft Si Compact Digital Mixer	
<b>Speakers</b>	2x Turbosound Inspire iP1000	2x JBL Control One Pro (Monitors)
<b>Multi</b>	12x (8x Typically Available) XLR Tie Lines (6x Send, 2x Return)	
<b>Playout</b>	Mac Mini (w/ QLab 4)	
<b>Microphones</b>	4x Sennheiser ew300 G2 Beltpack 2x Sennheiser ew300 G2 Handheld 2x Behringer C-2 1x Behringer C-1	2x Sennheiser e845 Handheld 1x Sennheiser e614 2x Audio-Technica PRO45 Hanging 2x PULSE MP33868 (Show Relay)

## Comms

4x Metro Audio / Tecpro compatible belt packs and headsets  
Alternatively, there are 3x Wireless DECT headsets.

**Please note at this time these systems are mutually exclusive and not interlinked**

## Projection

**Backdrops** The Theatre is equipped with a 'digital backdrop' arrangement. An Optoma EH320UST ultra short through projector is permanently hung downstage of LX 3 and produces an image of 5.5m x 3.8m. The screen is motorised but **cannot be moved during performance**. This screen can also be used as a cyclorama effectively.

**Video** There is an additional 7000 lumen Panasonic laser video projector designed for video screening purposes available upon request.

## Power

**Max Capacity** 3ø 200A Incomer

**Stage Power** Numerous 13A outlets provided throughout the stage and auditorium, protected by 30mA RCDs. Hard power available on all IWBs on True1 Outlets  
2x 32A 1Ø SL at stage level, **must be used with additional distribution with 30mA RCDs for sockets or final circuits.**

## Accommodation

<b>Dressing Room 1</b>	2.2x3.2m	<b>Dressing Room 2</b>	2.6x3.3m
------------------------	----------	------------------------	----------

Each of the above can accommodate 4-5, partition between can be removed to form one room

<b>Dressing Room 3*</b>	5.1x4.5	(*this area is not a dedicated dressing room but can be used as such by arrangement)
-------------------------	---------	--

Backstage paging and show relay (audio and video) to all dressing rooms

Private Cast/Company WC located in DR corridor

## House Information

### Accessibility

There is a platform lift to the rear row (H) of the auditorium, and step-free access to Row A for wheelchair users can be facilitated – please note this is by way of escorting patrons via the dressing room corridor.

### Box Office

Ticket sales through our box office are **online only** and on the door.  
No in-person box office service at present.  
A booking fee will be applied to all sales.

### Merchandising

Merchandise can be sold from a table in the foyer by prior arrangement.

### Catering

No kitchen facilities, small servery area FOH with Tea/Coffee making facilities.  
Bar can be provided by arrangement (Occasional License required)

### Staffing

*The Little Theatre* is operated by a charity, Nairn Drama, and staffed by volunteers. We will endeavour to help in any way, but please keep in mind that the theatre is not permanently staffed nor has predefined opening hours and there is no on-site office.

We ask that visiting companies provide two people to assist Front of House where possible, but can fulfil this from our own team of volunteers if required.

We will discuss your staffing requirements and can provide trained sound, lighting, and stage management personnel from our own team or trusted external contractors if required.

Additional charges may apply for staffing.

### Parking / Vehicle Access

The Theatre has no dedicated parking and limited on-street parking locally in a residential area, We ask that you are considerate to our neighbours and local residents and move all vehicles to the nearby (350yd) Public Links Car Park when not required at the Theatre.

Loading doors direct to stage available

### Health and Safety

Building users must familiarise themselves with our Health and Safety Policy.  
All Risk Assessments must be supplied no later than 14 days prior to the first agreed date of hire.

**NB** The use of any effects beyond standard haze - such as pyrotechnics, smoke, or strobe lighting - **must be approved prior to use** and may be subject to restrictions.

## Contact and More Information

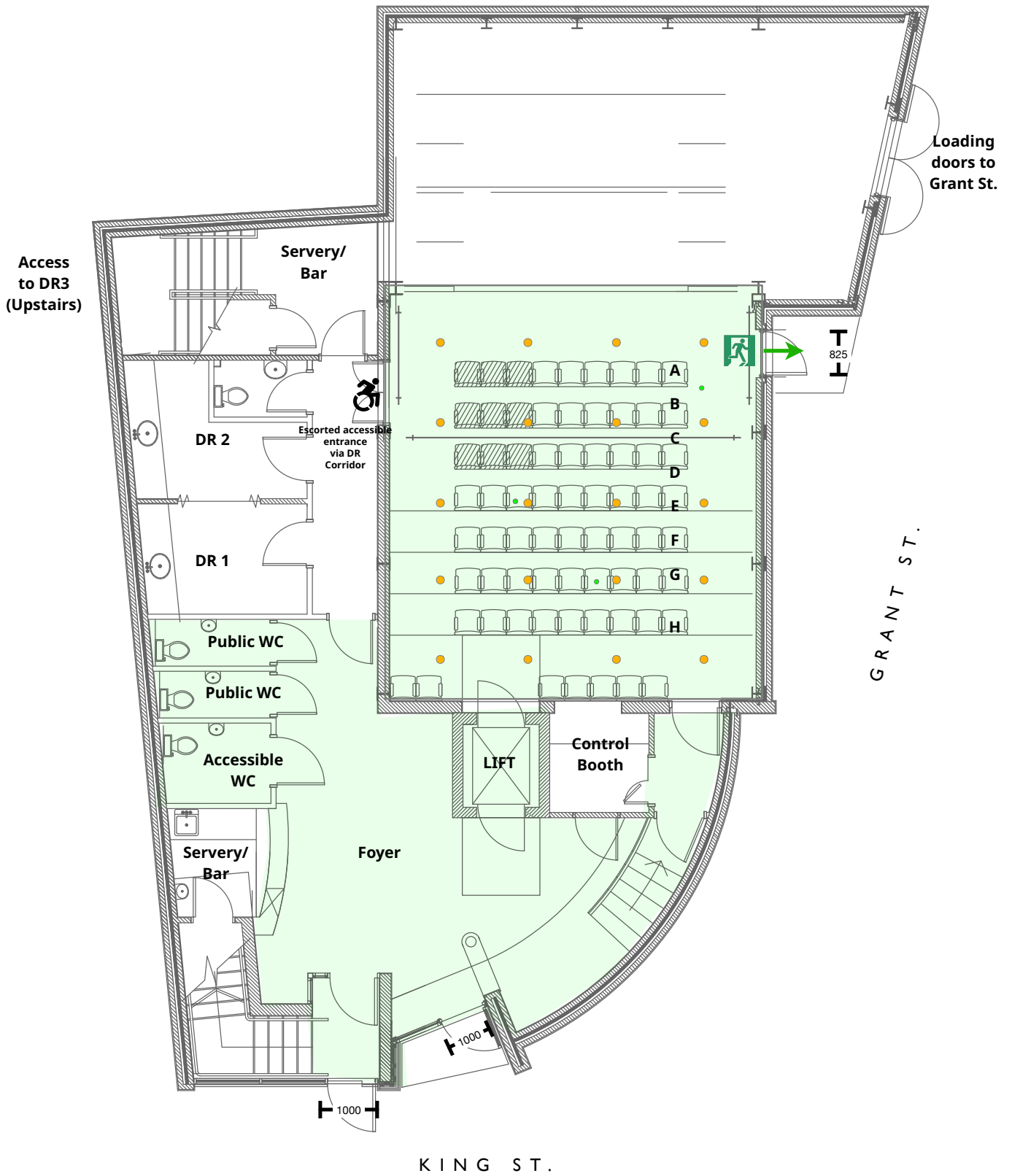
If you have any further questions about *The Little Theatre* and our facilities please don't hesitate to get in touch.

Please keep in mind that we are a charity and staffed by volunteers, as such we can't guarantee to answer the phone or keep 'normal office hours' (although we will be there when you need us!)

You can call eMail [tech@nairnlittletheatre.org.uk](mailto:tech@nairnlittletheatre.org.uk) with any general enquiries.

During your production you will be given the details of the Duty Manager who will assist you with anything in the Theatre.

**Floor Plan (Ground Level)**





## LX Circuits and Patch

Each on stage bar has 4x BS 546 15A outlets which can be patched to 18x 10A dimmers.

DMX is available on each bar. We have a mixture of 5pin and 3pin DMX fixtures and cable stock.

## LX House Rig

We operate a Standard Lighting Rig as shown overleaf.

This has been designed to accommodate most performances with minimal refocussing or repositioning of fixtures and enables *The Little Theatre* to host many performances with minimal effort as well as ad-hoc use by local groups.

**Where possible we ask that you do not refocus or move any of these lanterns but rather hang additional fixtures if required.**

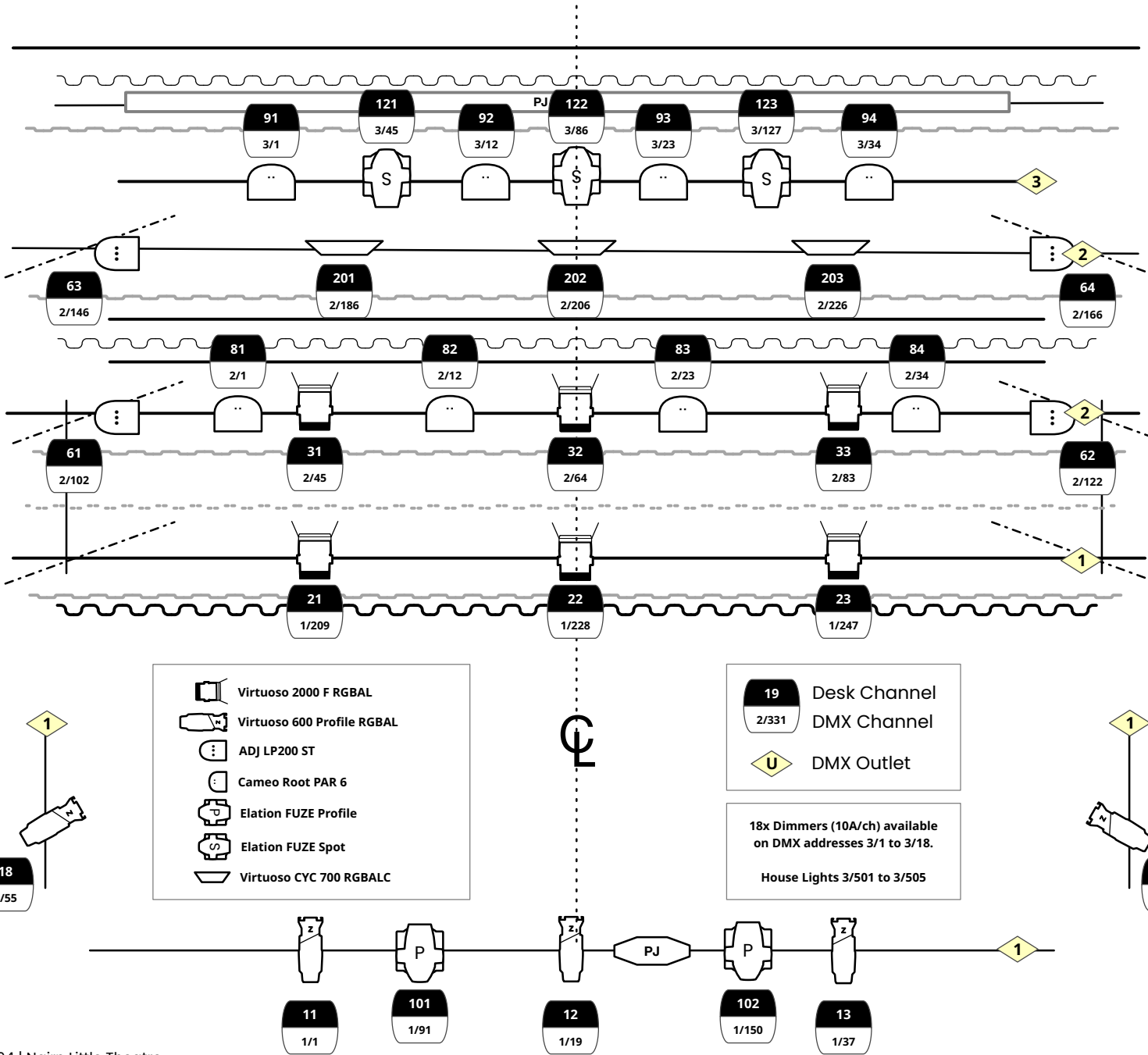
Our lighting control is an ETC Element running EOS 3.x. There is a free offline editor, ETCnomad, available from [etconnect.com](http://etconnect.com). A basic show file with (approximate) Augment3d model can be found at <https://nairnlittletheatre.org.uk/tech>

The fixtures used are configured as shown below

Fixture	Colour Mix	Mode	DMX Footprint	Performance Notes
<b>Virtuoso 2000 F</b>	RGBAL	TR-16 Tour (16 Bit)	19	Studio Mode
<b>Virtuoso 600 Profile</b>	RGBAL	TR-16 Tour (16 Bit)	18	Studio Mode
<b>Virtuoso 700 CYC</b>	RGBALC	TR-16 Tour (16 Bit)	20	Studio Mode
<b>Cameo Root Par 6</b>	RGBAW+UV	12ch Delay Off	11	No Barndoors
<b>ADJ COB LP200ST</b>	RGBAL	20ch	20	50°
<b>Elation Fuze Spot</b>	RGBMA	Extended	41	
<b>Elation Fuze Profile</b>	RGBMA	Extended	59	

**The in-house fixtures must NOT be readdressed or have modes changed**

# STANDARD HOUSE LX PLOT



**LX 5** (UNUSED)  
 US BLACK (TRAV. SL WING)  
 PJ SCREEN (SCENIC)  
 BORDER (DEAD HUNG)

**LX 4** (NO POWER)

**LX 3** (Circ. 25-30)  
 BORDER (DEAD HUNG)  
 HEMP SET #3 (SWL 45kg UDL)  
 MIDS (TRAV. SL WING)  
 HEMP SET #2 (SWL 45kg UDL)

**LX 2** (Circ. 19-24)  
 BORDER (DEAD HUNG)

GAUZE (OLIO DROP, OP. SR WING)

**LX 1** (Circ. 13 - 18)  
 BORDER (DEAD HUNG)  
 HOUSE TABS (TRAV. SL WING)

**ADV LX** (Circ. 4-9)

